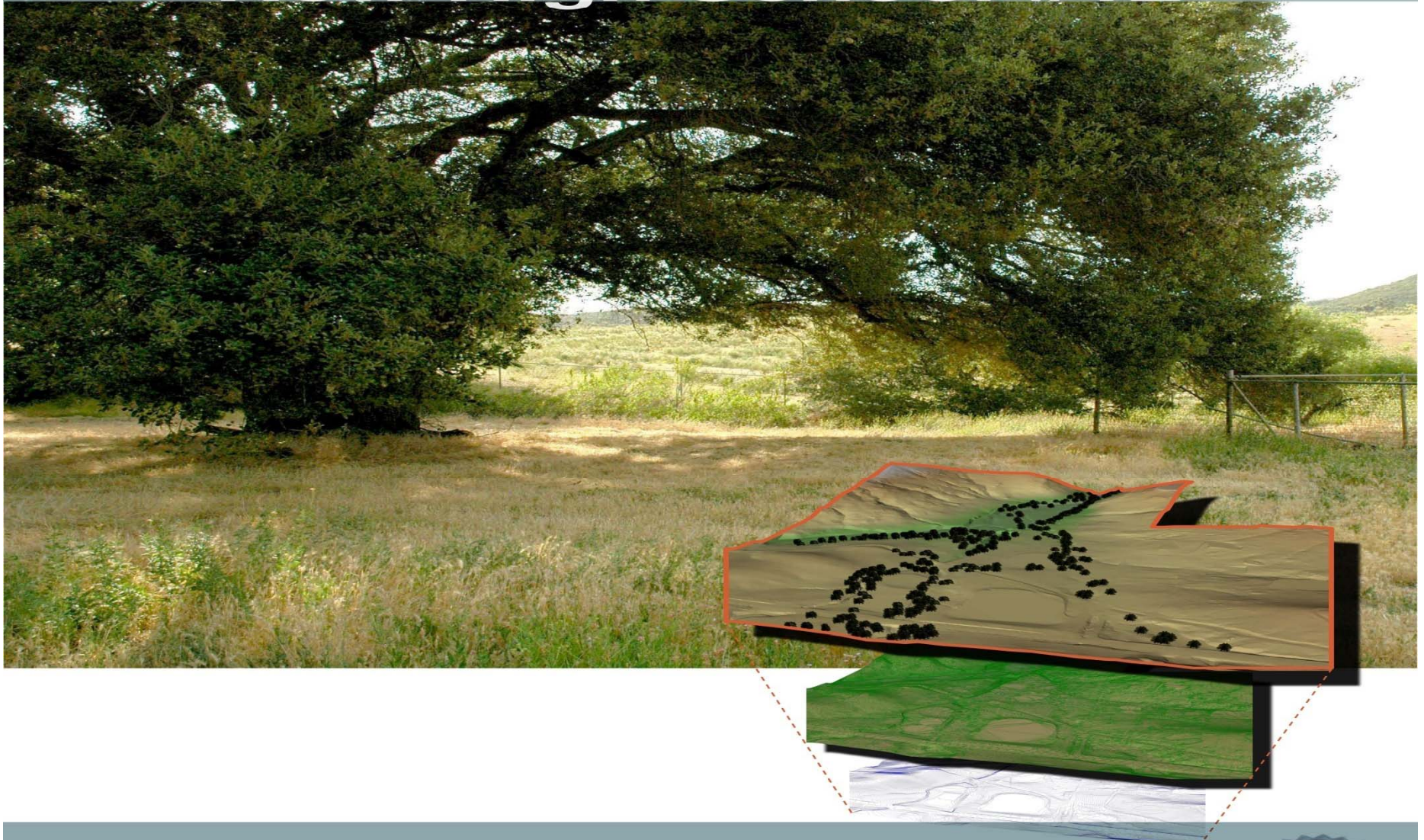


GOVERNING BOARD WORKSHOP  
NOVEMBER 9, 2010

# New High School #12



Grossmont Union High School District





## **Agenda for November 9th Governing Board Budget Workshop 12th High Planning Process Presentation**

---

- **1. Review of history of 12th High School in Alpine and local interest and efforts to bring a school to Alpine**
- **2. Bond Language and Budget Overview**
- **3. Curriculum Plan**
- **4. Building Schematics**
- **5. Site Layout (grading, master plan of all buildings, offsites, utilities, Lease Leaseback contractor selected)**
- **6. Site Acquisition**
- **7. Timeline**
- **8. Boundary Committee**
- **9. Wrap-Up**


# Proposition U

## Bond Measure Language

---

### NEW HIGH SCHOOL—ALPINE BLOSSOM VALLEY AREA

- Complete site development including utilities and road extensions
- After district-wide enrollment at the existing comprehensive high school sites, including the two current charter schools, equals or exceeds 23,245 (which is the official 2007-08 CBEDS enrollment) at the time of release of request for construction bids, begin and complete construction –classrooms and general use school buildings and grounds to accommodate up to 800 students, adequate academic/ vocational/job-training equipment, library/multimedia facilities, computer and science labs, food service facilities, and space for student-support services.



# New High School—Budget Summary

## (From May 2010)

---

\$M

	Original	Revised
Land	\$20M	\$25M
Building	<u>37</u>	<u>40</u>
Total	\$57M	\$65M



# Guiding Principles:

---

- **Connect with the community**
- **Integrate personalized technology**
- **Foster collaboration**
- **Meet the needs of every student**
- **Provide customized learning paths**
- **Promote authentic learning**
- **Reflect community history & culture**



# Curriculum Design:

---

- **Complete, Comprehensive High School**
- **Rigorous Academics**
- **Technology Based: 21<sup>st</sup> Century Learners**
- **College Preparation**
- **Career Preparation**
- **Personalized Plan for Student Learning**



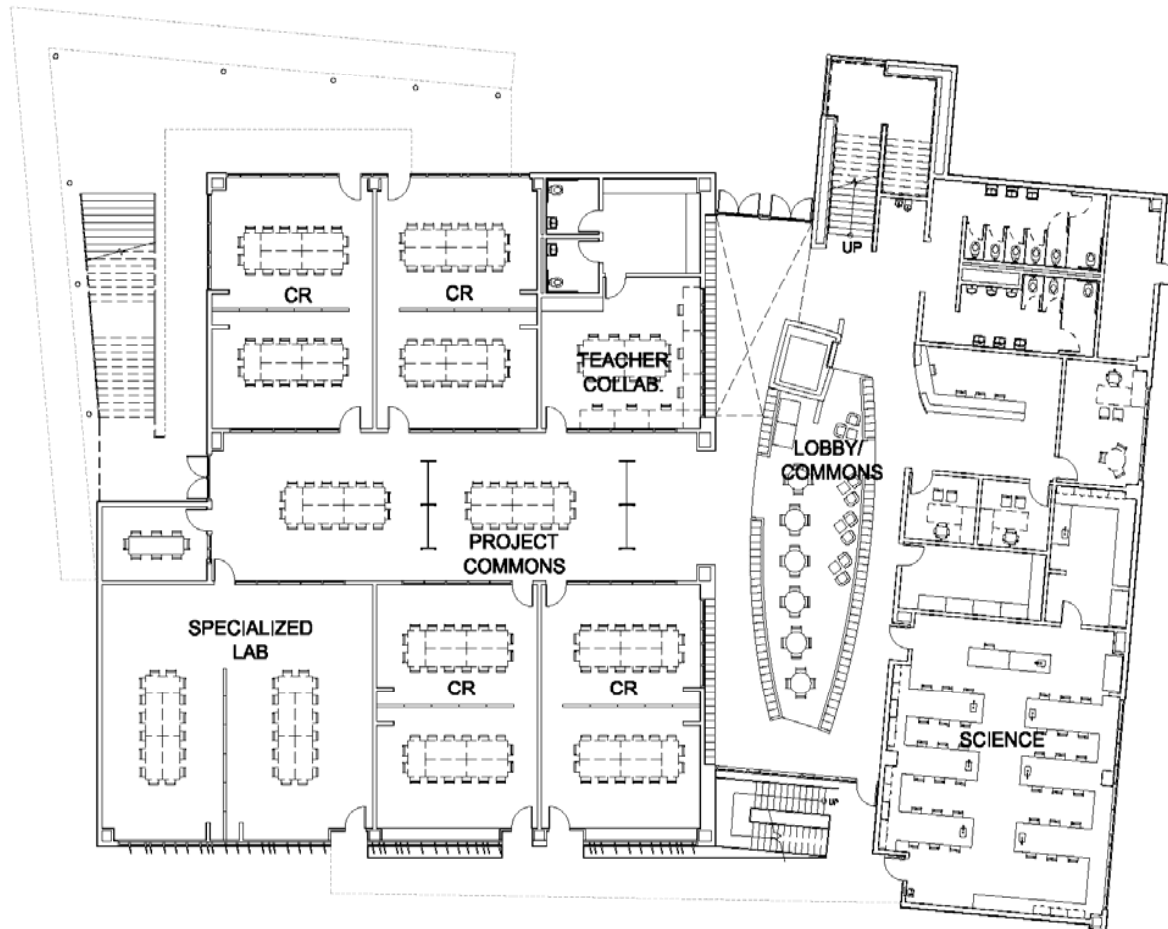
# Curriculum Considerations:

---

- **Possible Options for Students:**
  - **On-Line Courses**
  - **Internships**
  - **Project-Based Learning**
  - **Certification Courses**
  - **College Courses (9 – 14)**

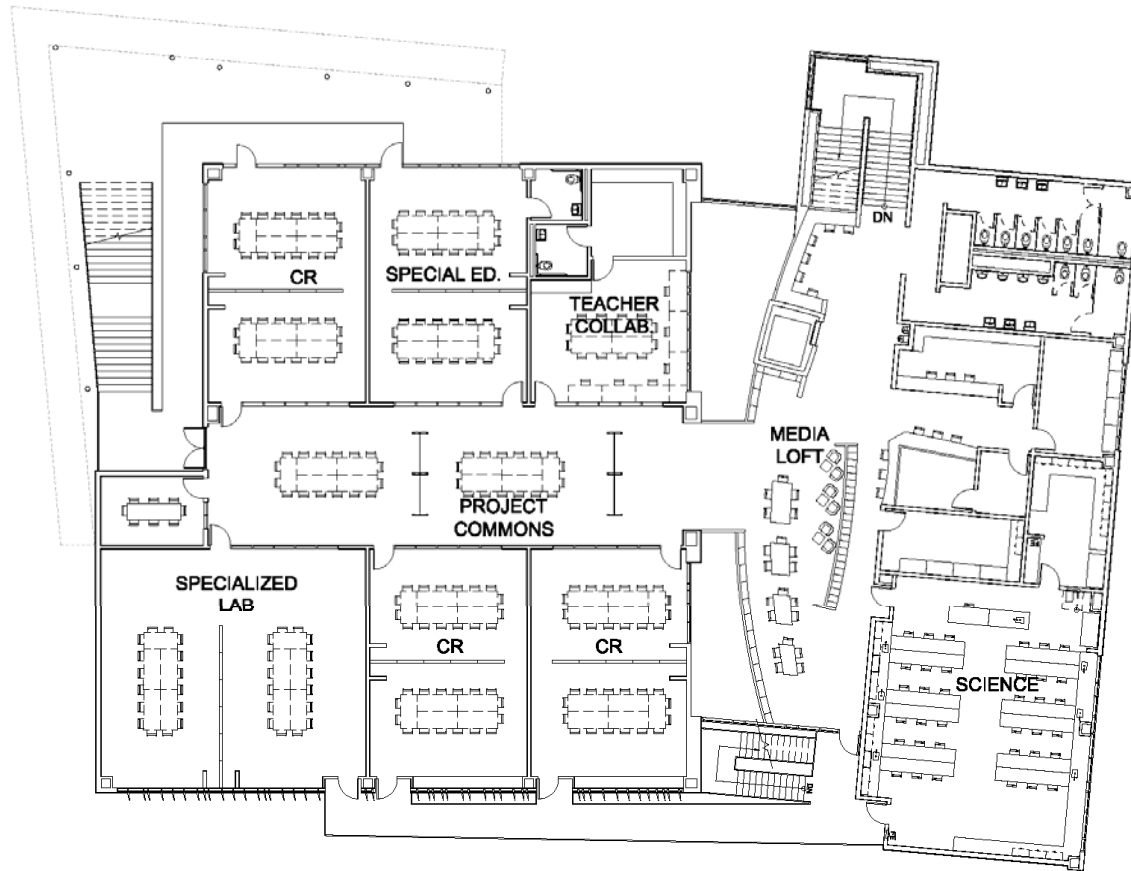


Grossmont Union High School District - New High School #12



**NEW HIGH SCHOOL #12 - TYPICAL SMALL LEARNING COMMUNITY  
(WITH ADVISORIES)**

FIRST FLOOR  
SCALE: 1/8"= 1'-0"



## NEW HIGH SCHOOL #12 - TYPICAL SMALL LEARNING COMMUNITY

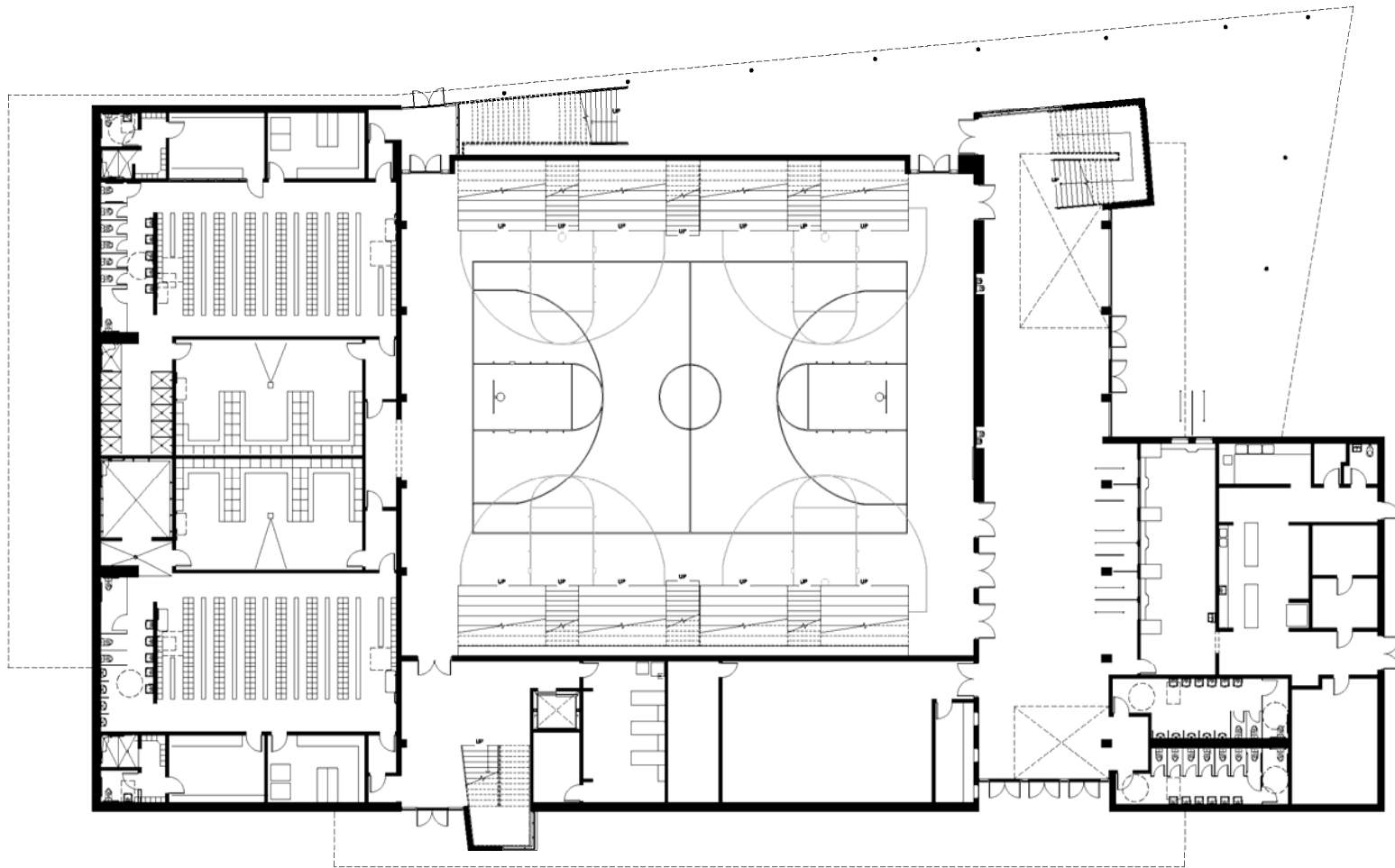
(WITH ADVISORIES)

SECOND FLOOR

SCALE: 1/8"= 1'-0"



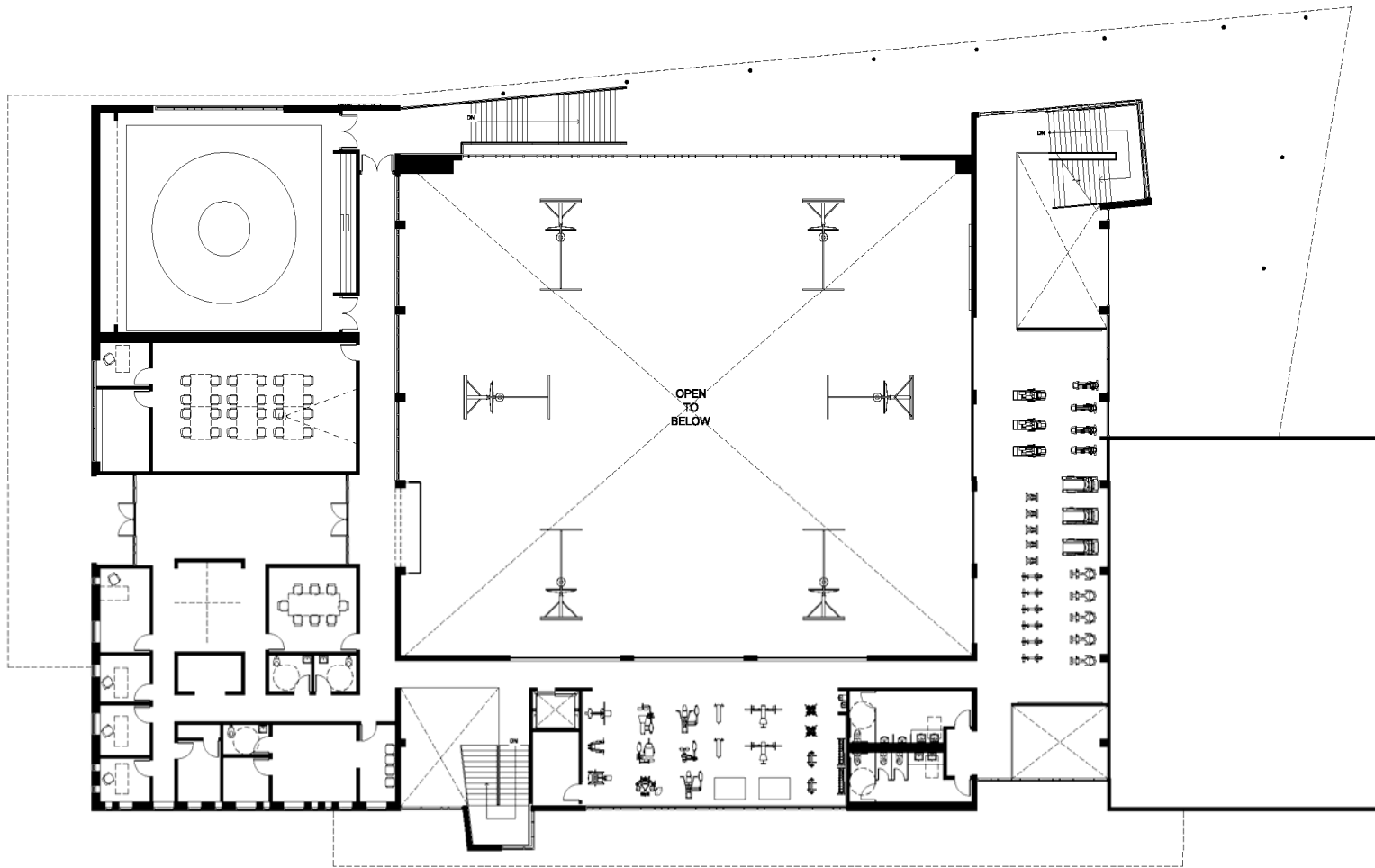
Grossmont Union High School District - New High School #12



**NEW HIGH SCHOOL #12 - FITNESS CENTER**

FIRST FLOOR

SCALE: 1/8" = 1'-0"



**NEW HIGH SCHOOL #12 - FITNESS CENTER**  
SECOND FLOOR  
SCALE: 1/8" = 1'-0"



# 12<sup>th</sup> High School - Phase One

Governing Board Presentation Slide — May 2010



# 12<sup>th</sup> High School - Phase One with Future Projects

(Fund Raise or cost savings)

Governing Board Presentation Slide – May 2010





## **GUHSD High School #12 Agencies**

---

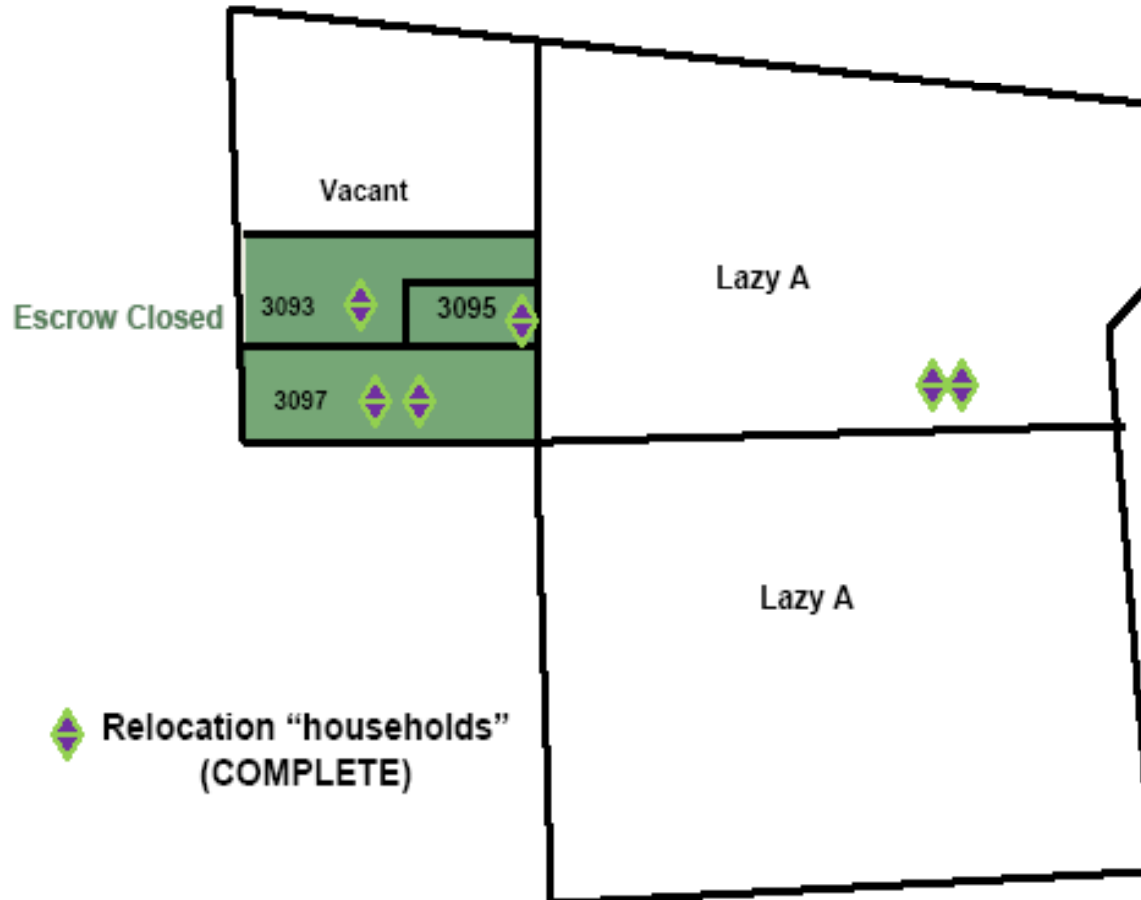
### **Current - Federal, State, Local and Public Agencies**

---

<b>Federal</b>	<b>Army Corp of Engineers</b>
<b>Federal</b>	<b>Fish and Game</b>
<b>State</b>	<b>California Fish and Wildlife</b>
<b>State</b>	<b>Regional Water Quality Board</b>
	<b>County of San Diego</b>
	<b>Padre Dam Water District</b>
	<b>San Diego Gas and Electric ( Gas and Electric)</b>
	<b>San Diego Gas and Electric ( Power Link)</b>
	<b>Communications - A T &amp; T and Cable</b>
	<b>County of San Diego - Alpine Sanitation Department</b>
	<b>Alpine Fire Protection District</b>
<b>State</b>	<b>DTSC - Department of Toxic Substances Control</b>
<b>State</b>	<b>DSA - Division of State Architects</b>
<b>State</b>	<b>CDE - California Department of Education</b>
<b>State</b>	<b>OPSC - Office of Public School Construction</b>
	<b>Other Interested Parties</b>

# LAND ACQUISITION/RELOCATION

*Proposition H/U Status  
Report*





## **GUHSD High School #12 Time Line**

<b>Site Acquisition - Complete</b>	<b>January - March 2011</b>
<b>Testing and Surveys - Complete</b>	<b>January - March</b>
<b>Agency Permitting - Complete</b>	<b>Spring 2011</b>
<b>Offsite - Alpine Blvd Improvements Start of Construction</b>	<b>Spring 2011</b>
<b>Water</b>	
<b>Sewer</b>	
<b>Utilities</b>	
<b>Drainage</b>	
<b>DSA Review of Grading Plans</b>	<b>January - April 2011</b>
<b>Onsite Construction Grading - Start</b>	<b>Spring 2011</b>
<b>DSA Review of Building Plans</b>	<b>March - July 2011</b>
<b>Phase 1 Construction - Start</b>	<b>Summer 2011</b>
<b>Classroom Building (2)</b>	
<b>Wellness Building</b>	
<b>School Opening</b>	<b>Fall of 2013</b>

## Recommendations for the Boundary Committee of Stakeholders

### Tentative time line:

- Begin our meetings with stakeholders in February 2011.
- Conduct 4 or 5 meetings.
- Committee will conclude in April or May 2011
- Board will vote at June or July 2011 Board meeting.

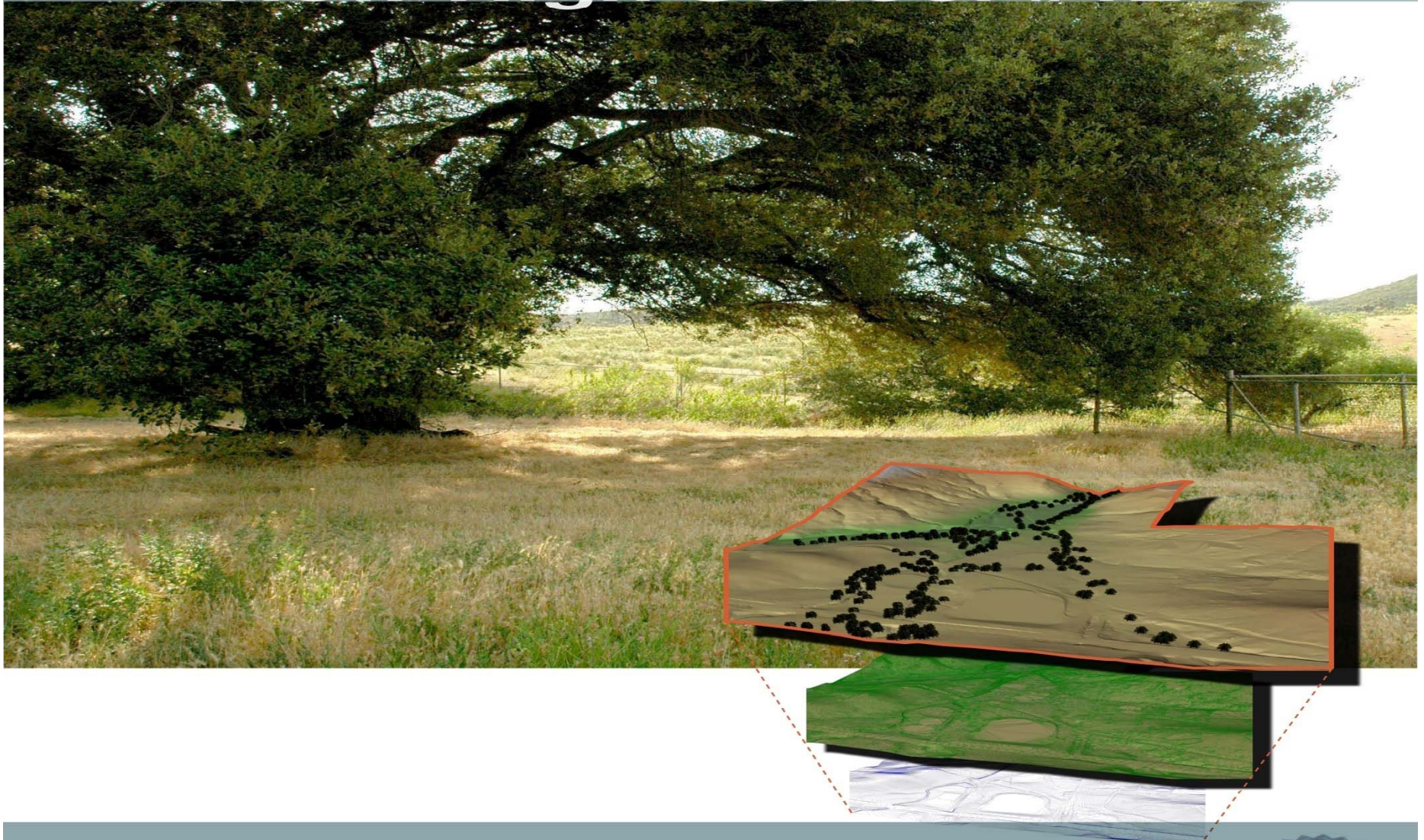
<u># of Positions</u>	<u>Stakeholder Group</u>	<u>Potential Members</u>
1 – non voting	Resource	Vince O’Hara
1	Committee Chair	TBD
1-3	District Office Staff	Supt. Selects
2 – non voting	Board Members	Board Pres. Selects
9 (3 each category)	Site Admin/Certificated/Classified	Principal Selects From randomly assigned categories
2	Parents from District PTSA/PTO	PTSA/PTO Selects
2	Alpine PTSA representatives	Alpine PTSA Selects
1	Tribal representative	Tribal Chair Selects

**18-20 Voting Members**

**\*Invite a representative from feeder districts to attend as non voting members.**

GOVERNING BOARD WORKSHOP  
NOVEMBER 9, 2010

# New High School #12



Grossmont Union High School District

